

**Technical Selection Chart**

Direction of rotation of the Pumps **I** = indirect – counter clockwise  
**D** = direct – clockwise

The direction of rotation can only be changed in the factory.  
 Therefore please assure that you state the desired direction of rotation as per dimension sheet when ordering.  
 Standard design of the pump for two pipe installation,  
 Design for one pipe installation on enquiry!

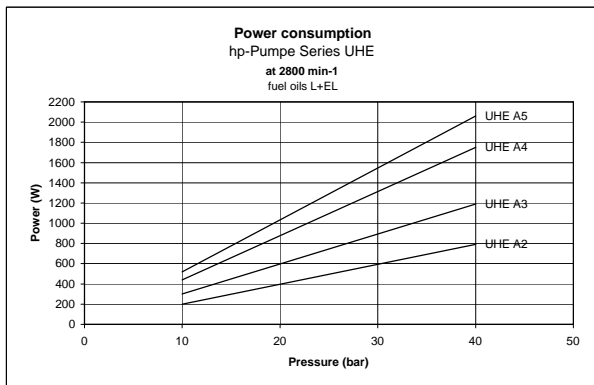
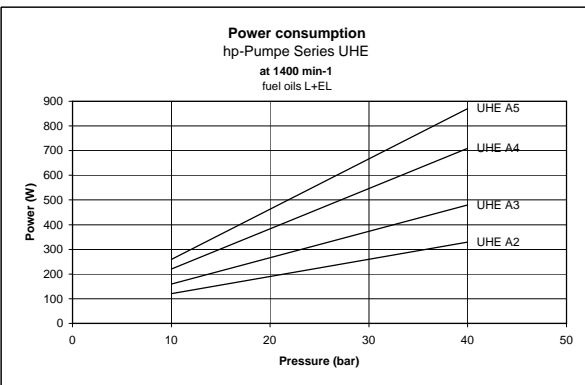
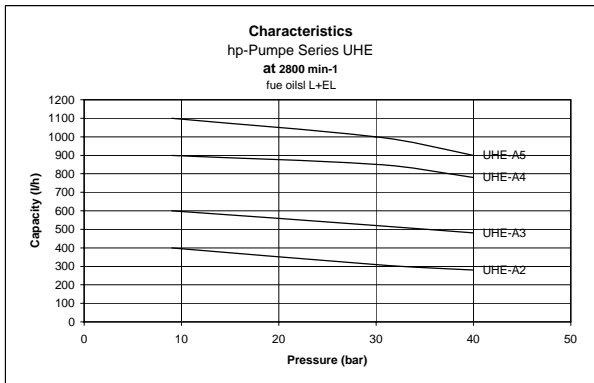
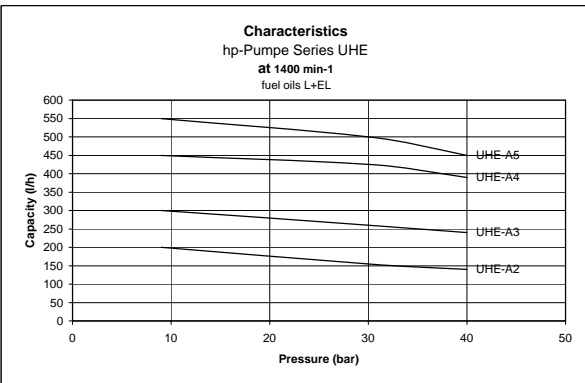


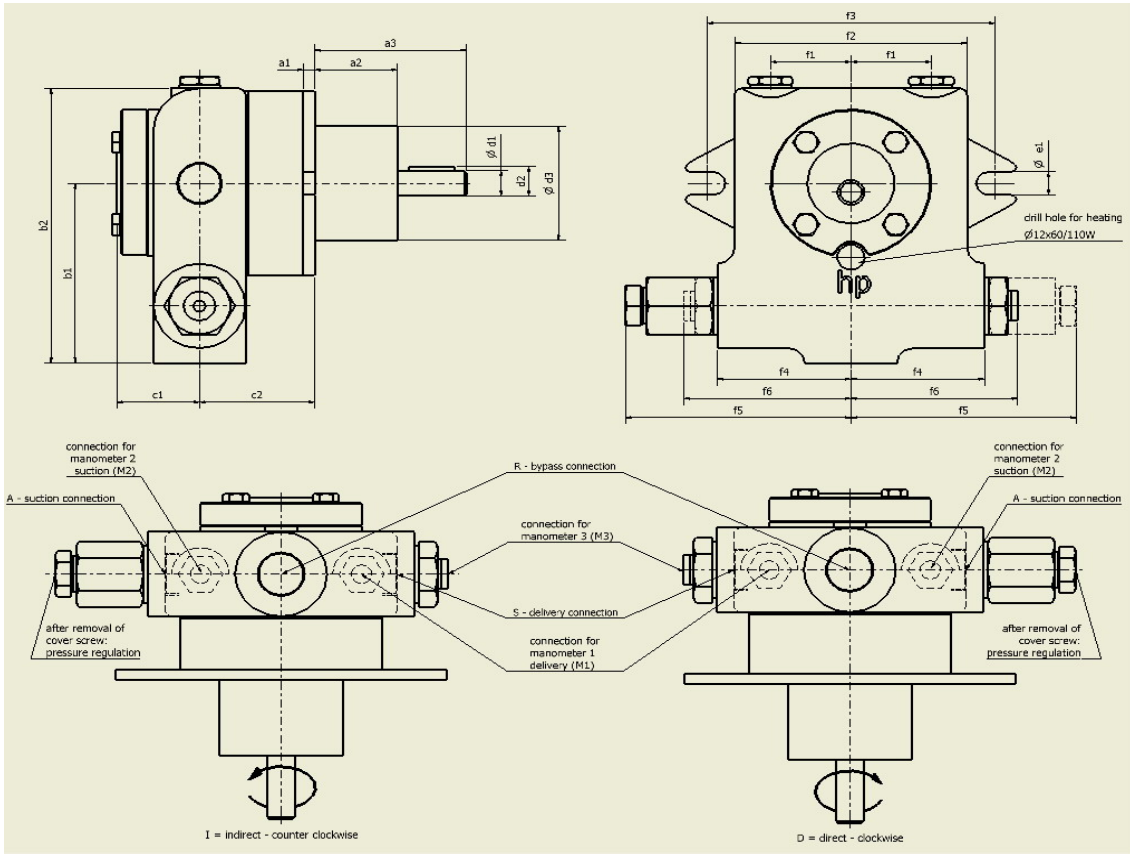
**hp-internal gear pumps up to 40 bar** (Direction of rotation **I** = indirect - counter clockwise)

hp-internal gear pump Series UHE	Viscosity: 6 mm <sup>2</sup> sec <sup>-1</sup> at 20°C								Gear Rotor Size Ø	Shaft Ø	Threaded Connection for (S/D/R)	Manometer Connection (M1/M2)	max. Permissible Pump RPM (min <sup>-1</sup> )	Net- Weight (kg)
	n = 1400 min <sup>-1</sup>				n = 2800 min <sup>-1</sup>									
	Size:	Discharge l/h			Article-No.	Discharge l/h								
	at 9 bar	at 30 bar	at 40 bar	I	at 9 bar	at 30 bar	at 40 bar	I				bei I/D	bei I/D	
UHE-A2-PZ	200	155	140	0110542	400	310	280	0130542	38	12	G ½"	G ¼"	2800	4,4
UHE-A3-P	300	260	240	0110543	600	520	480	0130543	38	12	G ½"	G ¼"	2800	4,6
UHE-A4-M	450	425	390	0110544	900	850	780	0130544	38	12	G ½"	G ¼"	2800	4,8
UHE-A5-GZ	550	500	450	0110545	1100	1000	900	0130545	38	12	G ½"	G ¼"	2800	5,0

**hp-internal gear pumps up to 40 bar** (Direction of rotation **D** = direct - clockwise)

hp-internal gear pump Series UHE	Viscosity: 6 mm <sup>2</sup> sec <sup>-1</sup> at 20°C								Gear Rotor Size Ø	Shaft Ø	Threaded Connection for (S/D/R)	Manometer Connection (M1/M2)	Heating Capacity H2 in Watt at 230V, 50 Hz	Initial Pump Breakaway Torque (Nm)
	n = 1400 min <sup>-1</sup>				n = 2800 min <sup>-1</sup>									
	Size:	Discharge l/h			Article-No.	Discharge l/h								
	at 9 bar	at 30 bar	at 40 bar	D	at 9 bar	at 30 bar	at 40 bar	D				at I/D	at I/D	
UHE-A2-PZ	200	155	140	0120542	400	310	280	0140542	38	12	G ½"	G ¼"	110	1,6
UHE-A3-P	300	260	240	0120543	600	520	480	0140543	38	12	G ½"	G ¼"	110	1,6
UHE-A4-M	450	425	390	0120544	900	850	780	0140544	38	12	G ½"	G ¼"	110	1,6
UHE-A5-GZ	550	500	450	0120545	1100	1000	900	0140545	38	12	G ½"	G ¼"	110	1,6





Pipe Connections DIN ISO 228

Series	a1	a2	a3	b1	b2	c1	c2	d1	d2	d3
UHE-A2-PZ	5	36	66	85	130	36	50	12	13,5	54
UHE-A3-P	5	36	66	85	130	36	54	12	13,5	54
UHE-A4-M	5	36	66	85	130	36	58	12	13,5	54
UHE-A5-GZ	5	36	66	85	130	36	64	12	13,5	54

Series	e1	f1	f2	f3	f4	f5	f6	S; A; R	M1; M2	M3
UHE-A2-PZ	11	35	101	125	58	98	72,5	1/2"	1/4"	1/8"
UHE-A3-P	11	35	101	125	58	98	72,5	1/2"	1/4"	1/8"
UHE-A4-M	11	35	101	125	58	98	72,5	1/2"	1/4"	1/8"
UHE-A5-GZ	11	35	101	125	58	98	72,5	1/2"	1/4"	1/8"

Conversion Table Suntec - hp-Technik

Suntec	hp-Technik	Suntec	hp-Technik
TA 2 A ==>	UHE-A2-PZ-D	TA 2 C ==>	UHE-A2-PZ-I
TA 3 A ==>	UHE-A3-P-D	TA 3 C ==>	UHE-A3-P-I
TA 4 A ==>	UHE-A4-M-D	TA 4 C ==>	UHE-A4-M-I
TA 5 A ==>	UHE-A5-GZ-D	TA 5 C ==>	UHE-A5-GZ-I

hp-electric standby and companion Heaters Series H2, for hp Industrial Pumps

All hp Industrial Pumps Series UHE-AX can be equipped with electric heating, Series H2, at the factory.

