

## INSTALLATION

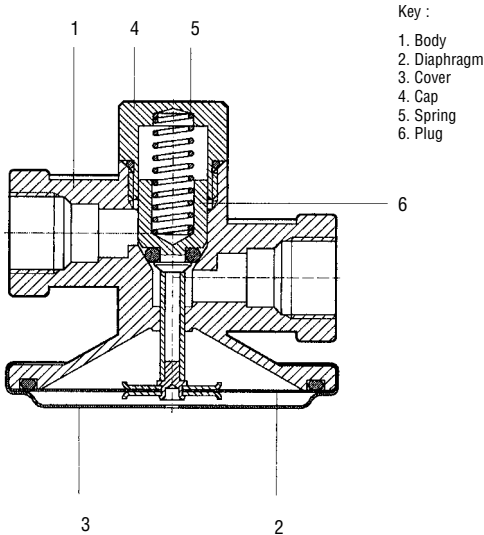
The SICUREX diaphragm valve should be installed on the burner supply pipe, close to the burner and at the same height, and before the filter so that the latter is included in the section of protected piping.

## OPERATION

The valve diaphragm in direct contact with the outlet, has a surface 36 times greater than the surface of the seal seat. The spring, which tends to close the plug, is set at 18,000 mm WG (1.8 bar). The plug is opened when a force  $F = 18,000/36 = 500$  mm WG is applied on the diaphragm. Hence the negative pressure created by the burner commands the opening of the SICUREX diaphragm valve. As a result its action is progressive and jerk-free because the fuel oil acts as shock absorber. When the burner stops, the negative pressure is decreased until it ceases, thus allowing the spring to gradually close the plug.

## APPROVALS

Approved by the Interior Ministry.



## SIC10

SICUREX.

Diaphragm valve for automatic shut-off of fuel oil in the burner supply pipe. Used to advantage instead of the solenoid valve; It does not run risk of seizing of the plug as it is commanded directly by the suction of the burner pump.

Part No.

0150110

### DESIGN FEATURES

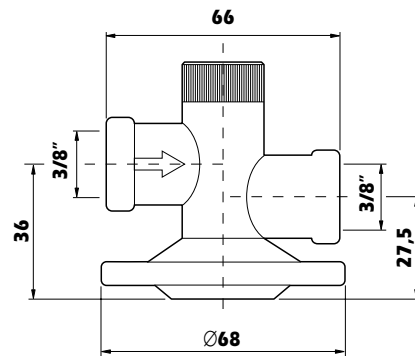
Body	Die-cast aluminium
Diaphragm	Oil-resistant rubber
Connections	3/8" female with plastic bushings for pipes $\varnothing 6 \times 8$ , $\varnothing 8 \times 10$ , $\varnothing 10 \times 12$

### TECHNICAL CHARACTERISTICS

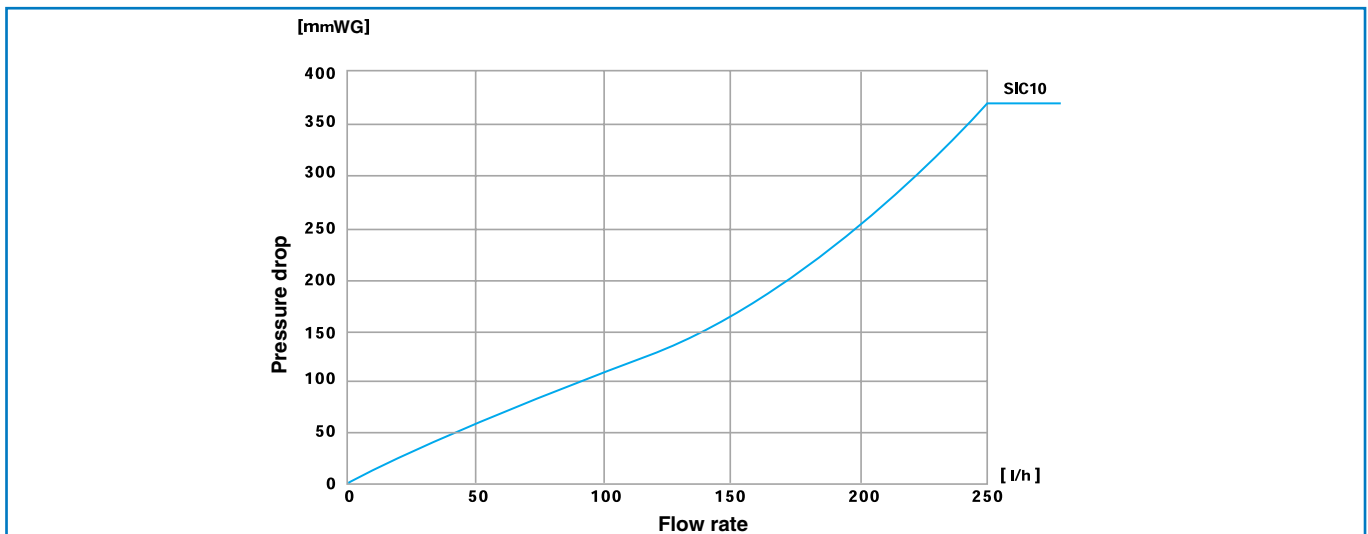
Max. operating capacity	200,000 kcal/h
Max. operating pressure	3 bar
Min. opening negative pressure	500 mm WG

### Overall dimensions (mm)

#### SIC10



### Flow rate/Pressure drop diagram



N.B. Max. difference in level between SICUREX and burner should not exceed 300 mm.