

Technical Data Flame Sensor FFS08 ... / FFS08 ... L

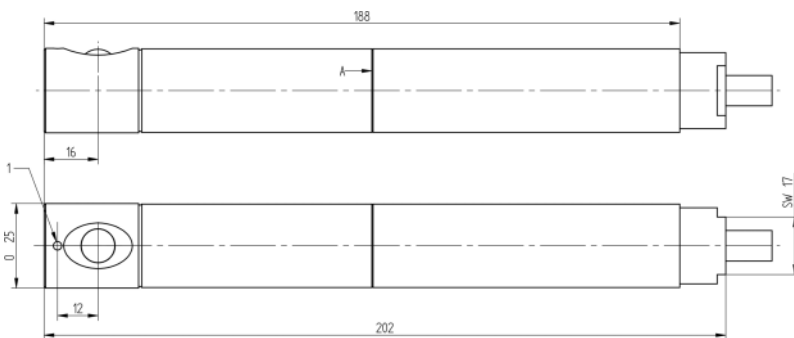


Fig. 1-1 FFS08 ... L

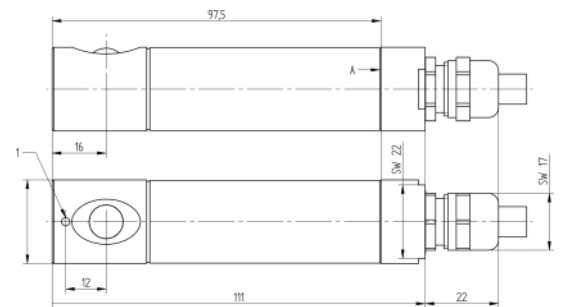


Fig. 1-2 FFS08 ...

NOTICE

The Connecting cable at FFS08 is marked with yellow heat-shrinkable sleeve approx. 1,5 cm (0.59 in).

Dimensions

Housing type	Standard, L - long
Weight [kg]	Standard version incl. cable 3 m (78.74 ") - 0.40 kg (14.1 oz), L version incl. cable 3 m (78.74 ") - 0.55 kg (15.9 oz)

Input Data

Power supply	24 ... 42 VDC, supply from data interpreting device
Power consumption	< 20 mA

Technical Data Flame Sensor FFS08 ... / FFS08 ... L

Characteristics

Operation valid with	ETAMATIC, FA1, F152 F150 (not approved)
Technically not suitable with	F250, F151
Compatible	FFS08 UV- ... successor type of FFS06 UV- ... FFS08 IR- ... successor type of FFS06 IR- ...
Viewing angle	UV - approx. 8° IR - approx. 60°
Sensitivity min.	UV - 25 mVAC IR - 10 mVAC
Spectral region	UV-1 260 ... 400 nm UV-4 215 ... 360 nm (replaces UV-2) IR-1 1,200 ... 2,800 nm IR-1 T 1,200 ... 2,800 nm IR-1 T/S2 1,200 ... 2,800 nm

Environmental Conditions

Ambient temperature	UV -20 °C ... +65 °C (-4 °F ... 140 °F) IR -20 °C ... +60 °C (-4 °F ... 149 °F)
Protection class	IP67
Level of protection	III

Order Information

659D31-	A 10 SPECTRUM	A 20 CABLE LENGTH	A 30 PLUG	A 40 EXTENSION/ HOUSING
---------	------------------	----------------------	--------------	-------------------------------

A 10 – SPECTRUM	Selection
TYP UV-1 UV-SPECTRAL RANGE 260 ... 400 nm	01*
TYP UV-4 UV-SPECTRAL RANGE 215 ... 360 nm	04
TYP IR-1 IR-SPECTRAL RANGE 1,200 ... 2,800 nm	10
TYP IR-1 T IR-SPECTRAL RANGE 1,200 ... 2,800 nm	20

* Default setting

A 20 – CABLE LENGTH*	Selection
Connecting cable, LENGTH 3 m, (10 ft.)	3*
Connecting cable, LENGTH 5 m, (16 ft.)	5
Connecting cable, LENGTH 10 m, (33 ft.)	10
Connecting cable, LENGTH 0,3 m, (1 ft.) just deliverable with plug	OE
Type FFS07, FFS08 with metal protecting hose, article no. with addition "/UL"	f.e. 659D21-01/0/03/UL/0

* Default setting

A 30 – PLUG	Selection
WITHOUT PLUG	0*
WITH PLUG	STE

* Default setting

A 40 – EXTENSION/HOUSING	Selection
STANDARD, immersion depth max. - 65 mm (2,56") Suitable bracket FS60 and cooling air housing FS65	0*
LONG TYPE, immersion depth max. - 150 mm (5,9") Suitable bracket FS60 and cooling air housing FS65	V

* Default setting

The information in this publication is subject to technical changes.

**LAMTEC Meß- und Regeltechnik
für Feuerungen GmbH & Co. KG**

Wiesenstraße 6
D-69190 Walldorf

Telefon: +49 (0) 6227 6052-0
Telefax: +49 (0) 6227 6052-57

info@lamtec.de
www.lamtec.de

